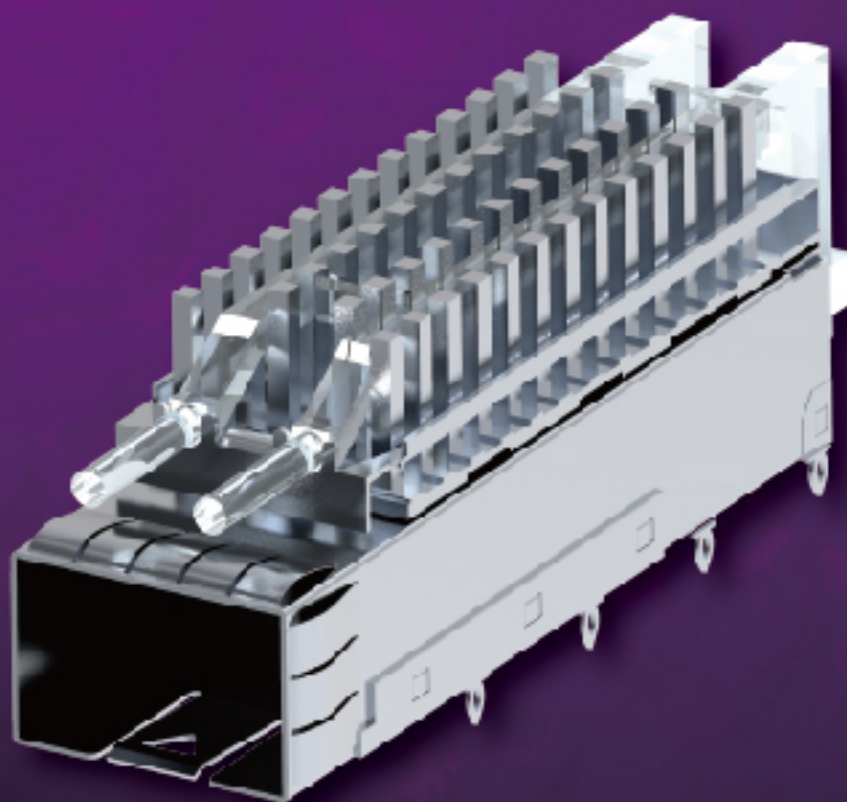


# SFP+ Connectors

---

8-55~8-64

• SFP/SFP+ Connectors



**AMTEK Technology Co., Ltd**



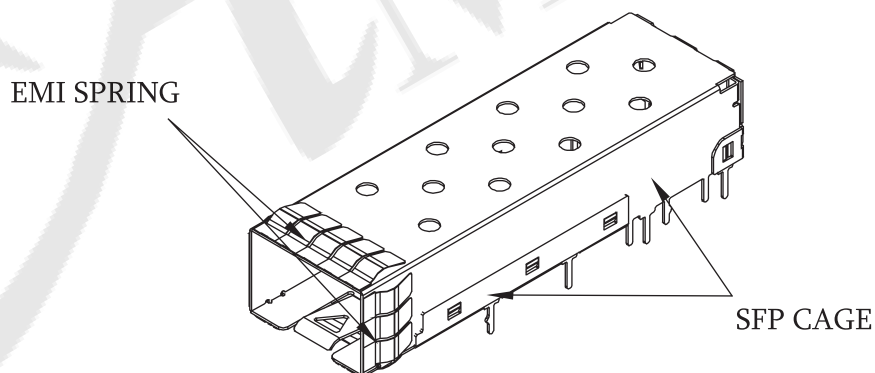
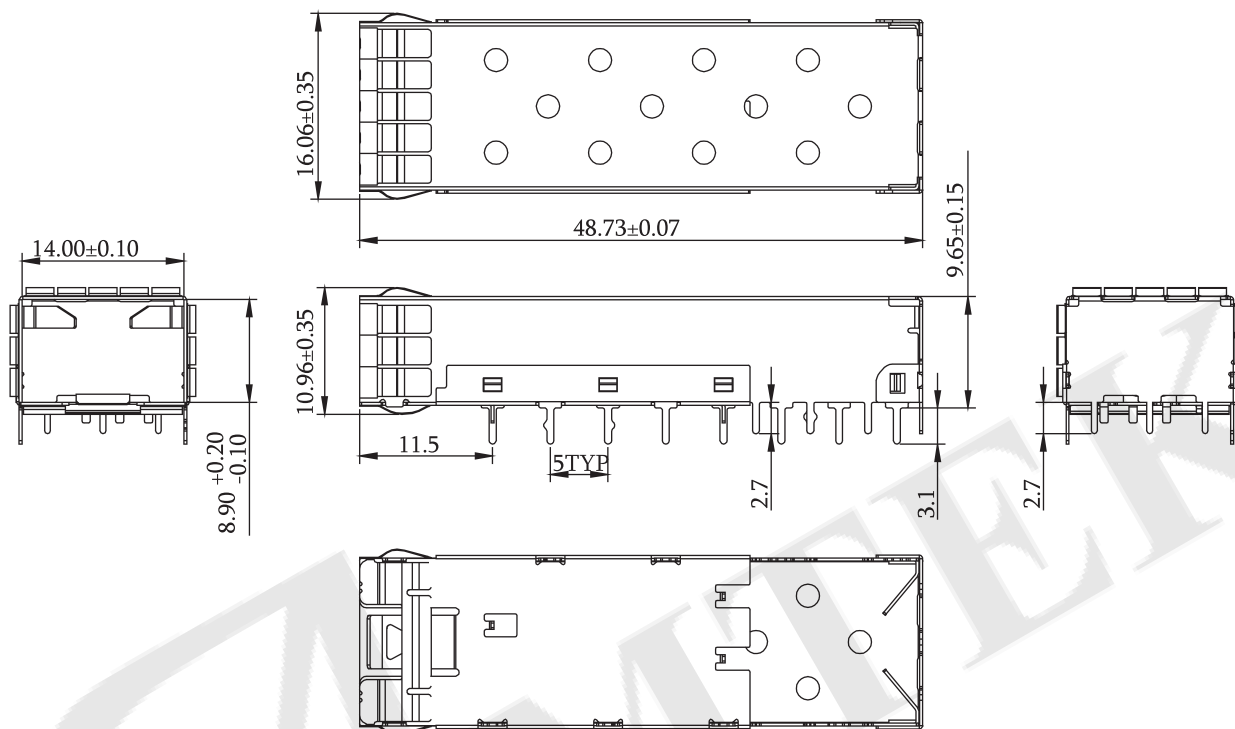
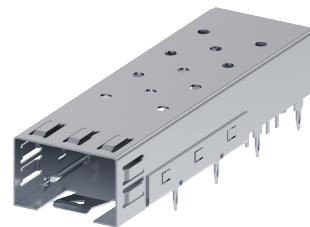
## SFP+ 1x1 Shielding Cage Solder

### Specifications

Operation Temperature: -40°C to +85°C

### Material

SFP Cage: Copper Alloy  
EMI Spring: Copper Alloy



## ORDER INFORMATION

5 H S P C 0 2 - 1 1 N M N X X X - 0 1

1 x 1 Port  
 M: Metal EMI  
 NN: No Plating  
 NI: Nickel Plating  
 X: Box



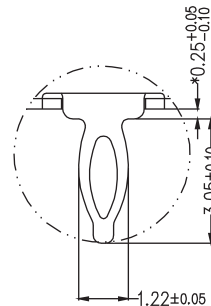
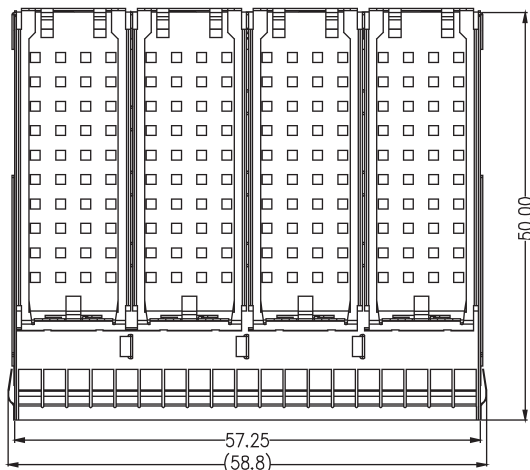
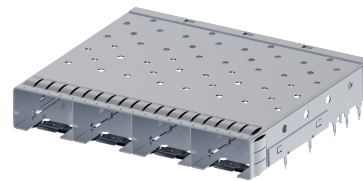
## SFP+ 1x4 Shielding Cage

### Specifications

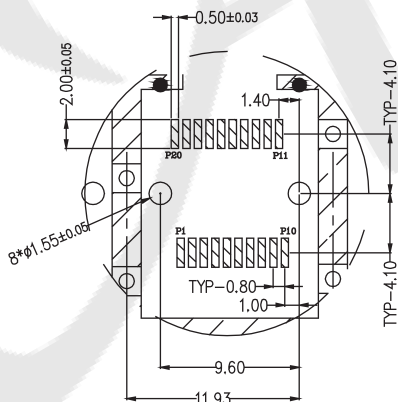
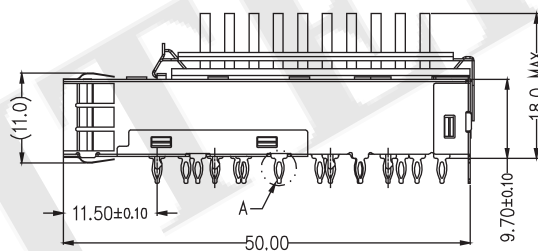
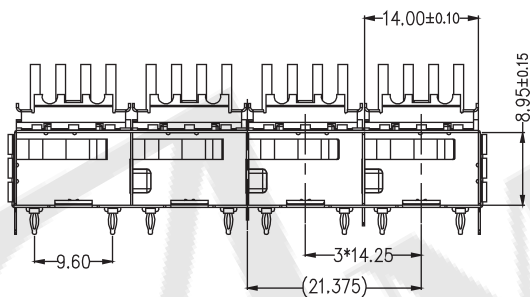
Operation Temperature: -40°C to +85°C

### Material

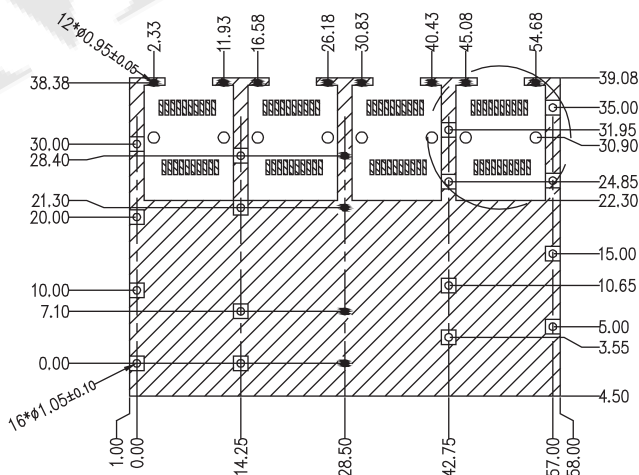
SFP Cage: Copper Alloy  
EMI Spring: Copper Alloy  
Heat Sink: Aluminum  
Heat Sink Clip: Stainless Steel



DETAIL "A"



DETAIL "A"



## ORDER INFORMATION

5 H S P C 0 2 - 1 4 N M P N I X - 0 2

1 x 4 Port

M: Metal EMI

P: Pin Type

X: Box

NI: Nickel Plating

# CONNECTORS MANUFACTURER



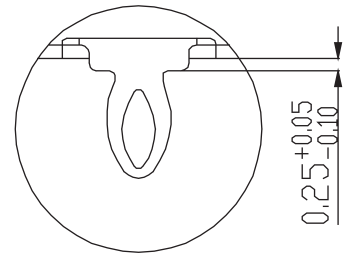
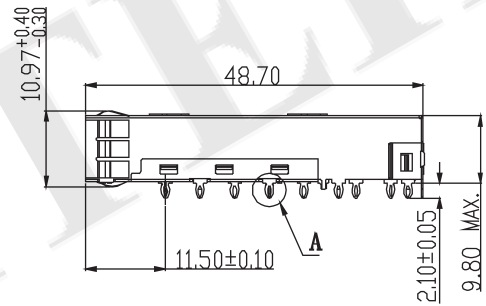
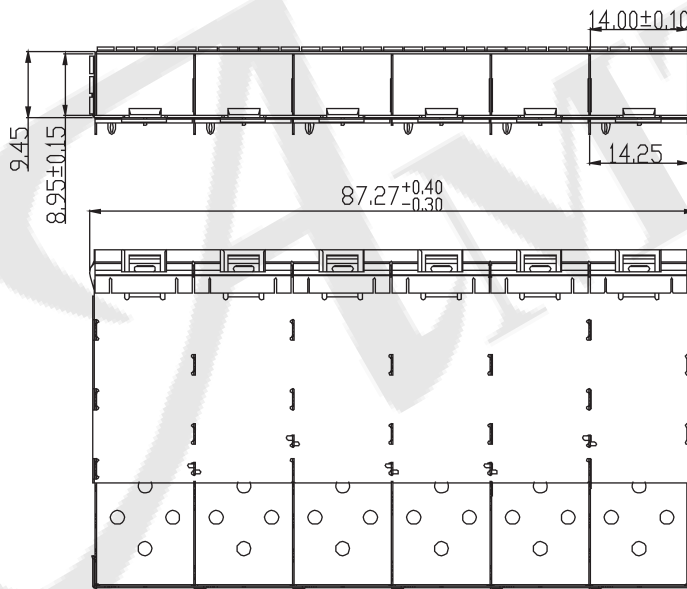
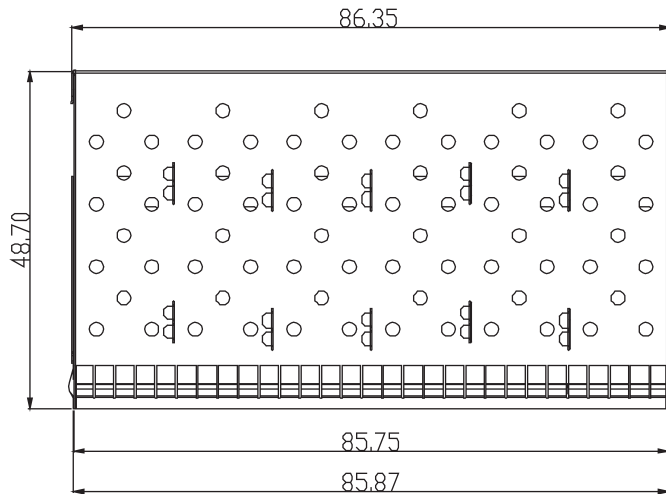
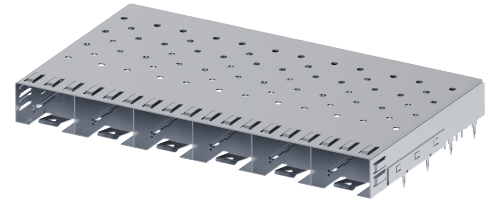
## SFP+ 1x6 Shielding Cage Standard Layout

### Specifications

Operation Temperature: -40°C to +85°C

### Material

Cage: Copper Alloy



Detail A

### ORDER INFORMATION

5 H S P C 0 2 - 1 6 N M N N I X - 0 1

1 x 6 Port

M: Metal EMI

X: Box

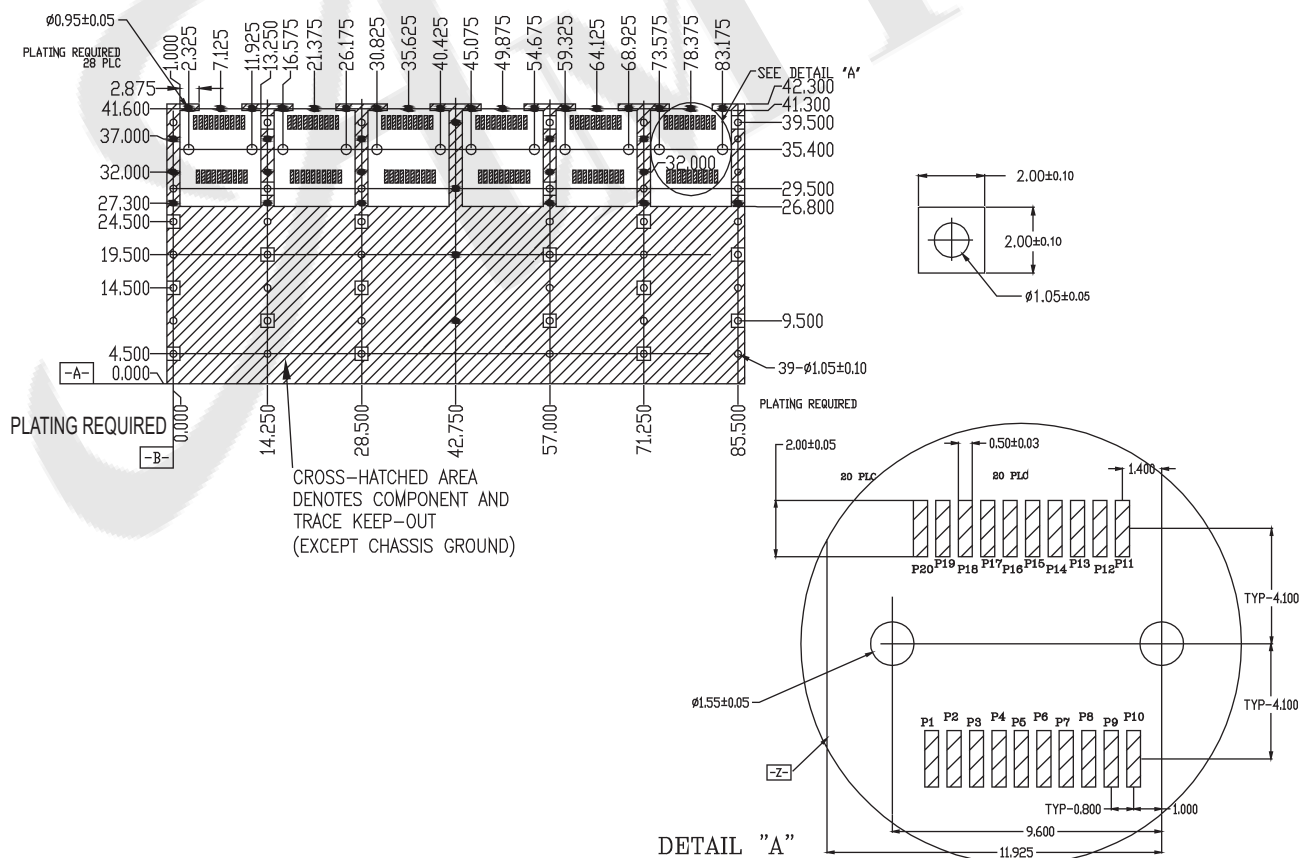
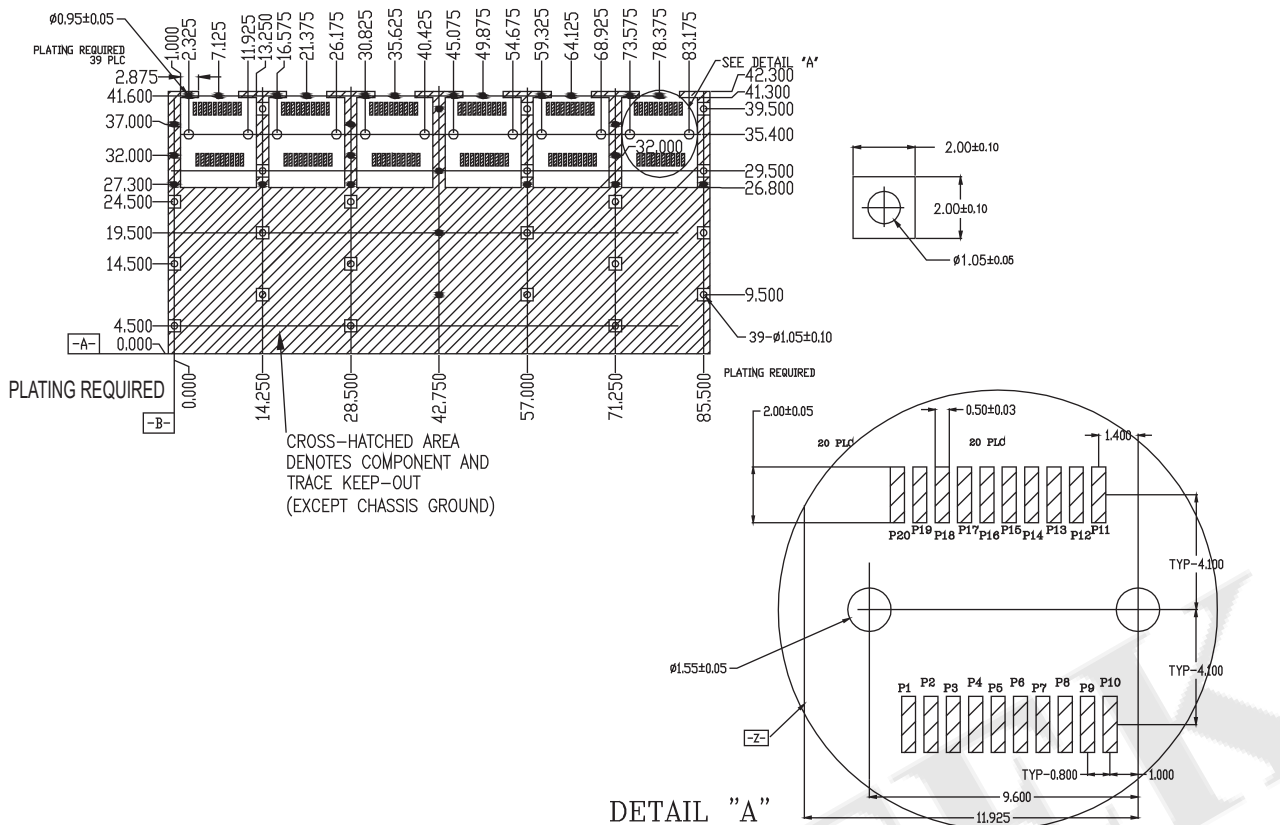
NI: Nickel Plating

SFP+ Series

ROHS

CONNECTORS MANUFACTURER





# CONNECTORS MANUFACTURER



SFP+ Series

ROHS

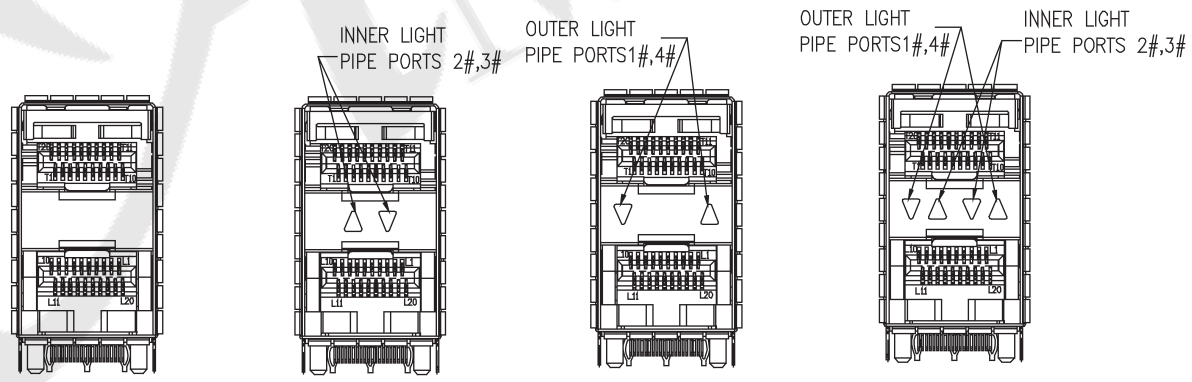
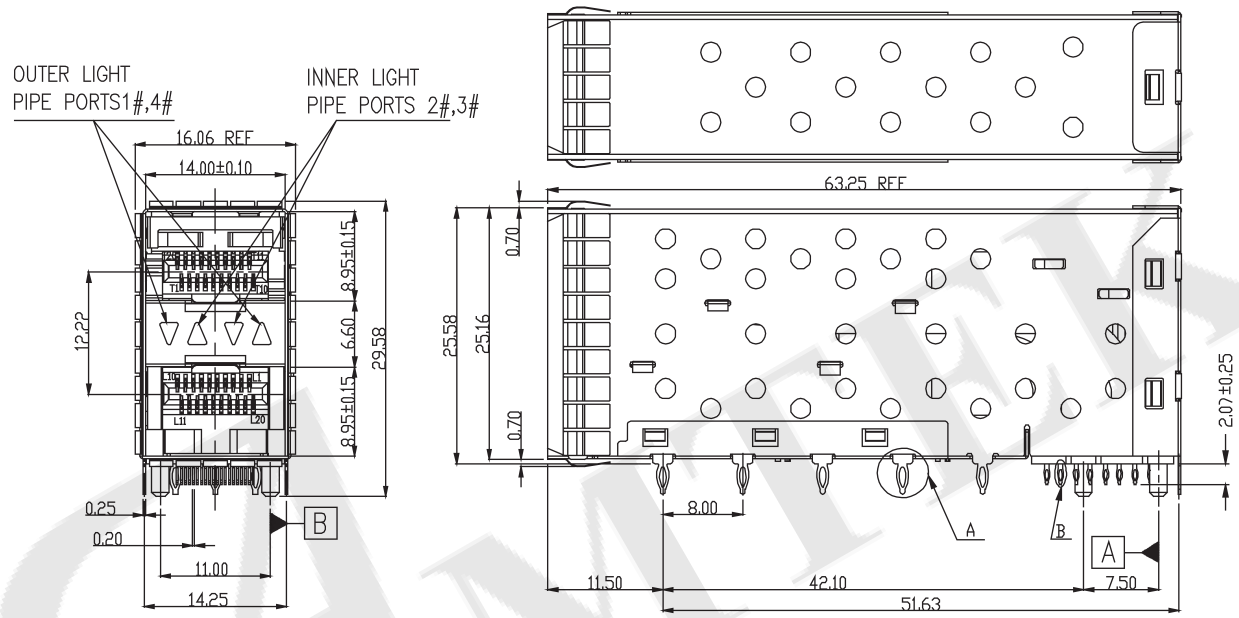
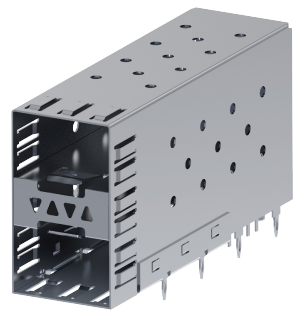
## SFP+ 2x1 With Light Pipe

### Specifications

Ratings Current: 0.5AMPS Max  
 Withstanding Voltage: 300V AC/Max  
 Ratings Voltage: 30 volt AC  
 Operation Temperature: -40°C to +85°C  
 Insulation Resistance: 1000MΩ Min

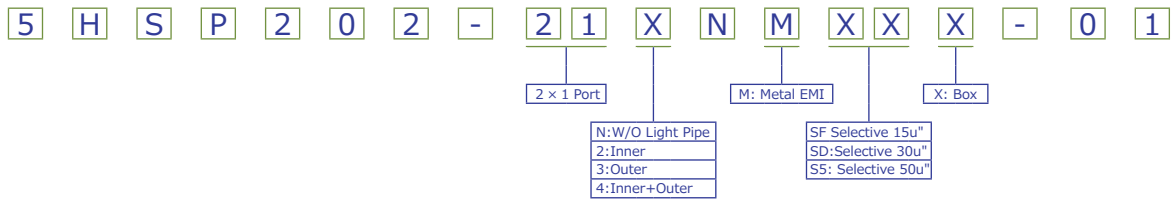
### Material

Insulator: LCP, UL 94V-0, Black  
 Contact Pin: Phosphor Bronze  
 Cage: Copper Alloy  
 Light Pipes: Polycarbonate, UL 94V-0, Clear  
 Light Pipe Housing: PBT UL 94V-0, Black



N:W/O Light Pipe      2:Inner      3:Outer      4:Inner+Outer

### ORDER INFORMATION



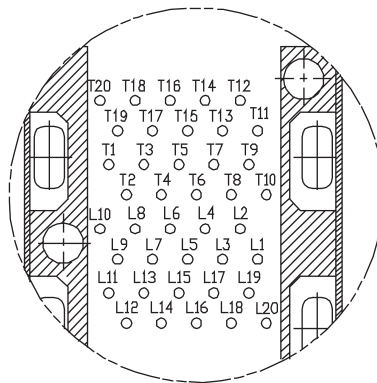
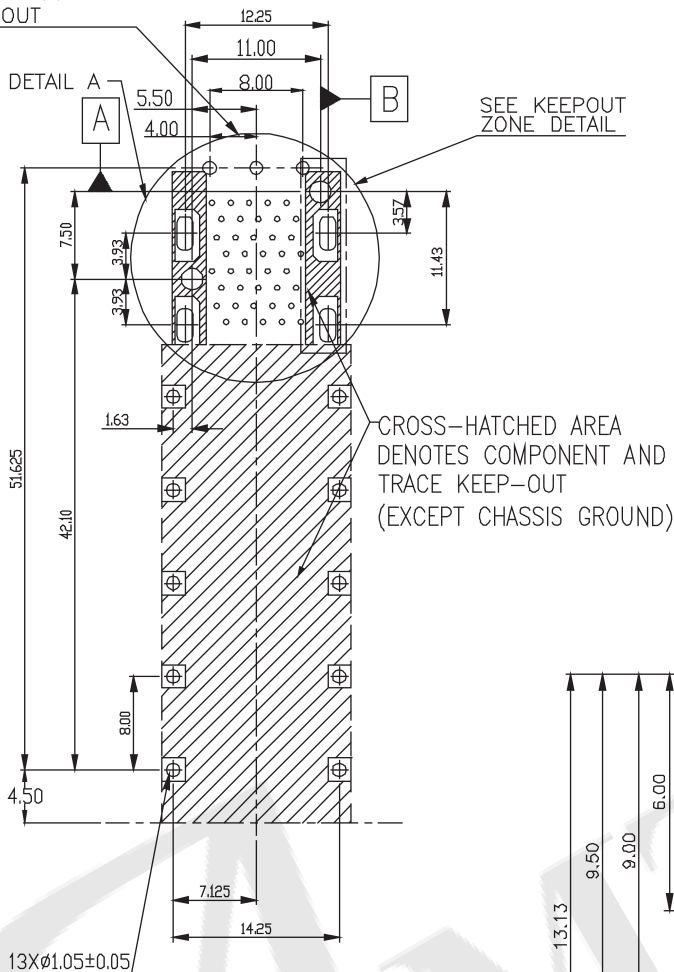
AMTEK CONNECTORS MANUFACTURER



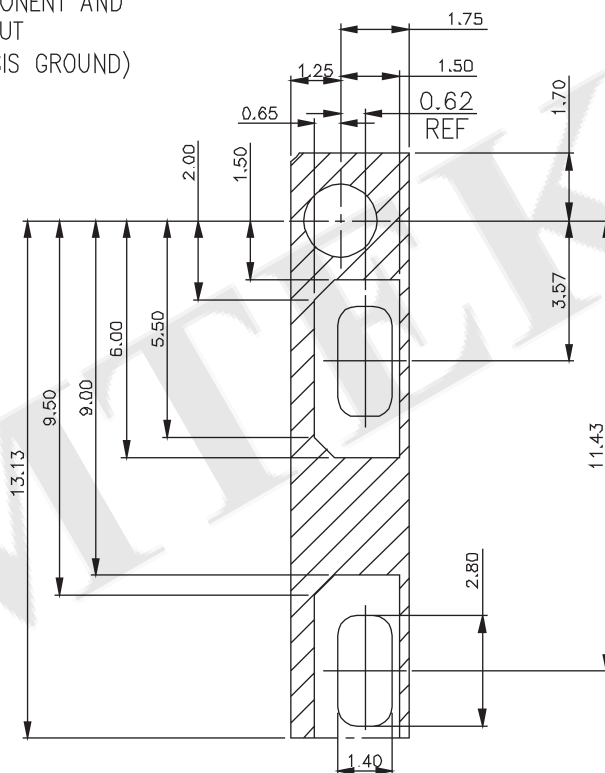
SEE CONNECTOR  
PIN-OUT

SEE DETAIL A

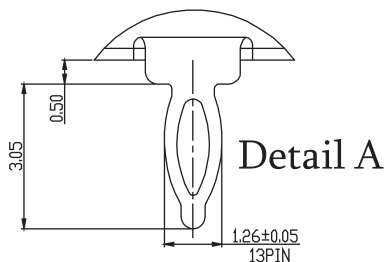
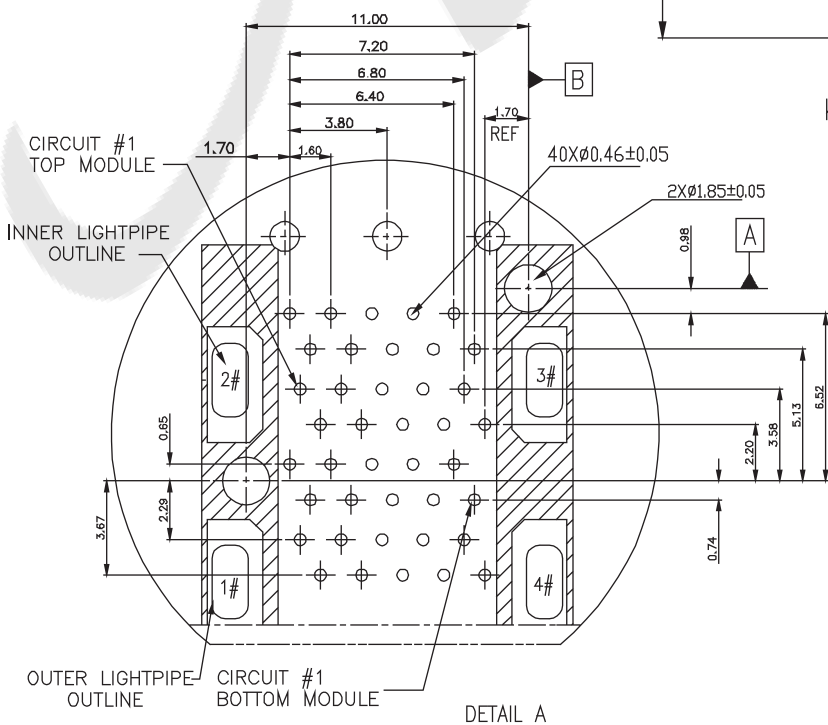
SEE KEEPOUT  
ZONE DETAIL



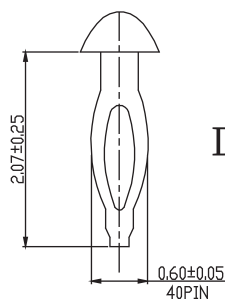
CONNECTOR PIN-OUT  
COMPONENT SIDE OF BOARD



KEEPOUT ZONE DETAIL



Detail A



Detail B

# CONNECTORS MANUFACTURER



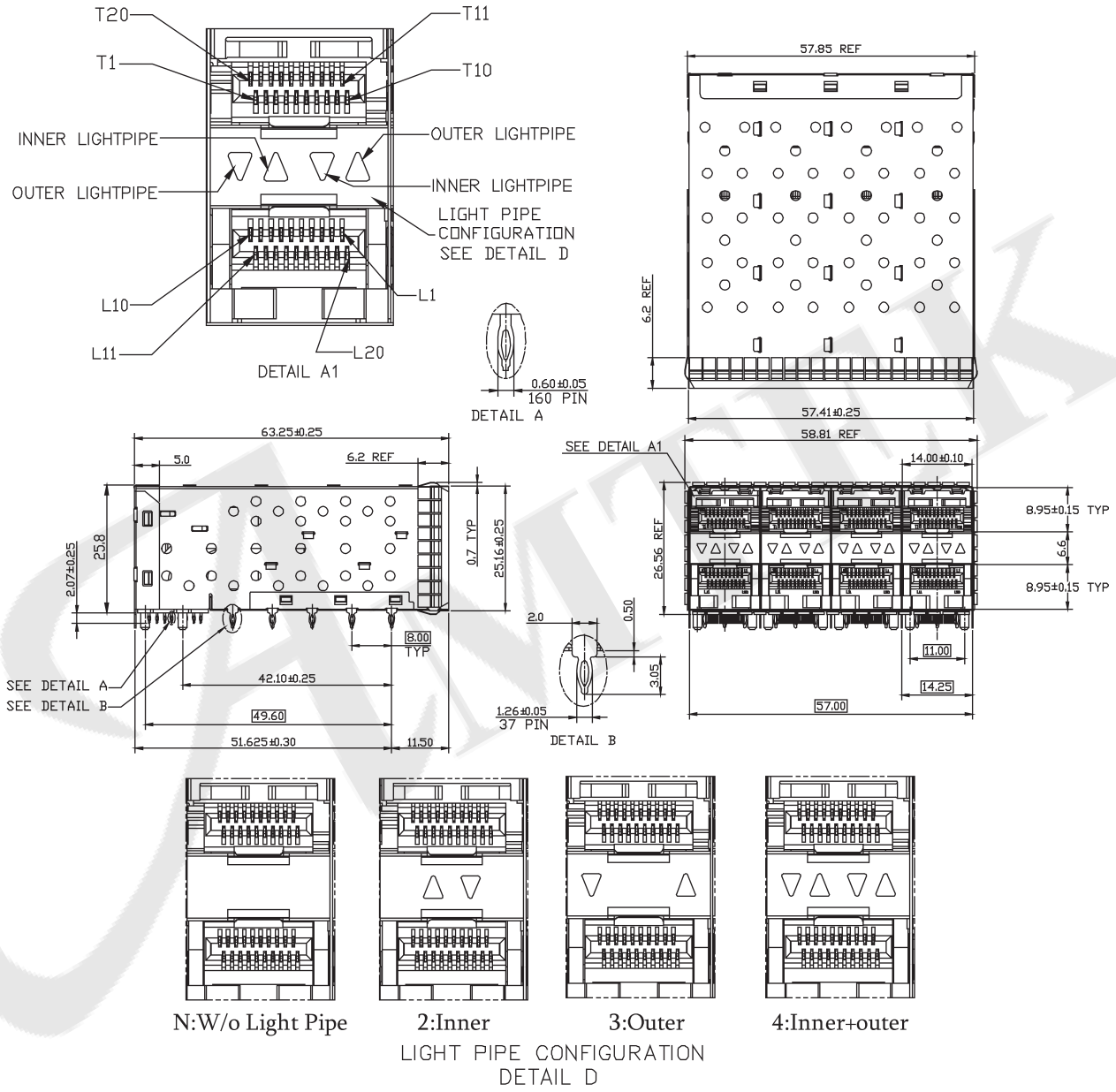
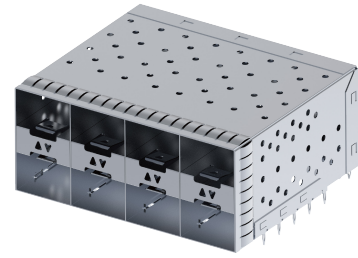
## SFP+ 2x4 Connector

### Specifications

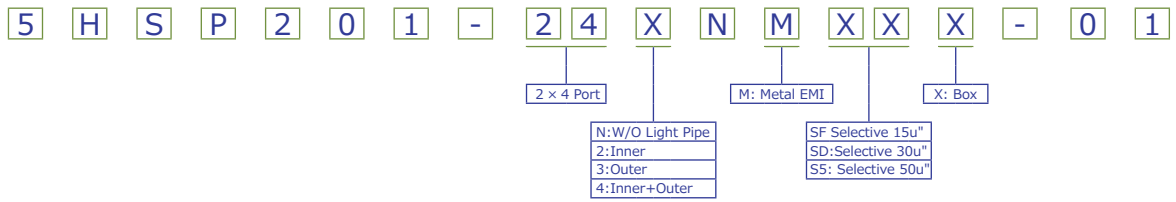
Ratings Current: 0.5 AMPS MAX  
 Ratings Voltage: 30 volt DC/AC(RMS) MAX  
 Withstanding Voltage: 300V AC/Max  
 Operation Temperature: -40°C to +85°C  
 Insulation Resistance: 1000MΩ Min

### Material

Insulator: LCP, UL 94V-0, Black  
 Contact Pin: Phosphor Bronze  
 Cage: Copper Alloy  
 Light Pipes: Polycarbonate, UL 94V-0, Clear  
 Light Pipe Housing: PBT UL 94V-0, Black  
 EMI Spring: Copper Alloy

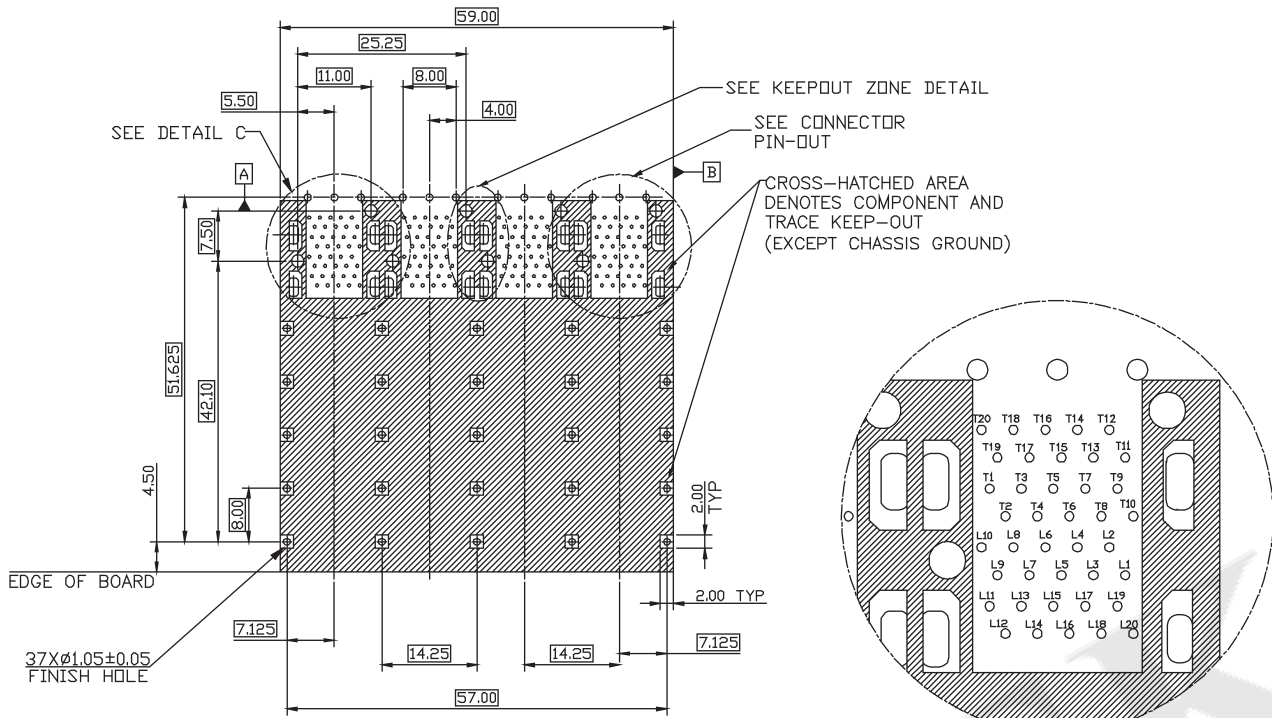


## ORDER INFORMATION

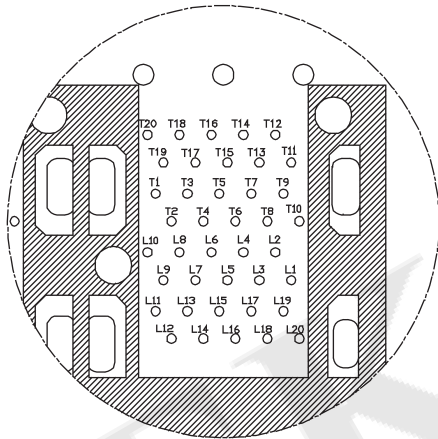


SFP+ Series

ROHS



RECOMMENDED PCB LAYOUT—COMPONENT SIDE  
 RECOMMENDED PCB THICKNESS—2.63 MM



CONNECTOR PIN-OUT  
 COMPONENT SIDE OF BOARD

THE ENTIRE AREA OF THE CONNECTOR FOOTPRINT  
 TO BE CONSIDERED THE KEEP-OUT AREA FOR COMPONENTS  
 (OTHER THAN LIGHT PIPE LED'S)  
 THIS AREA IS INDICATED BY THE DASHED LINE

