

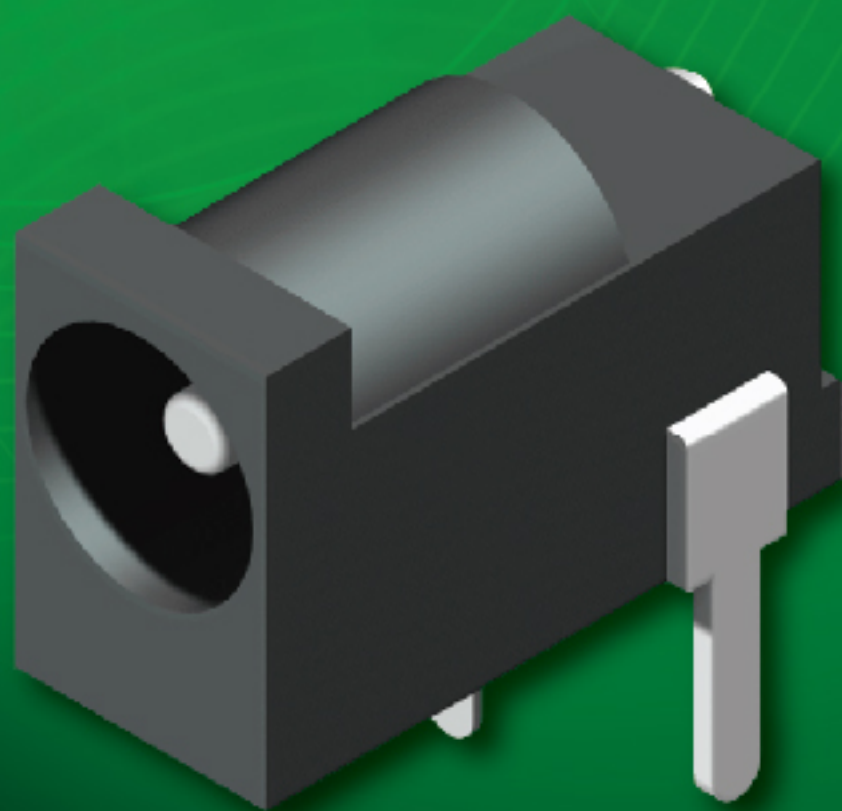
# I / O

# Connectors

---

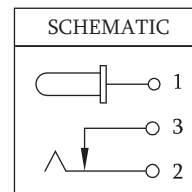
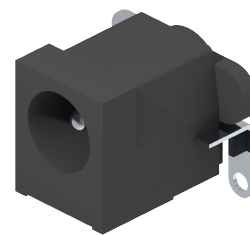
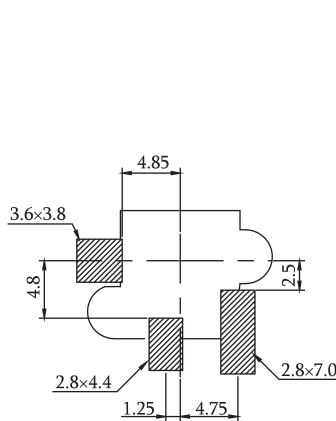
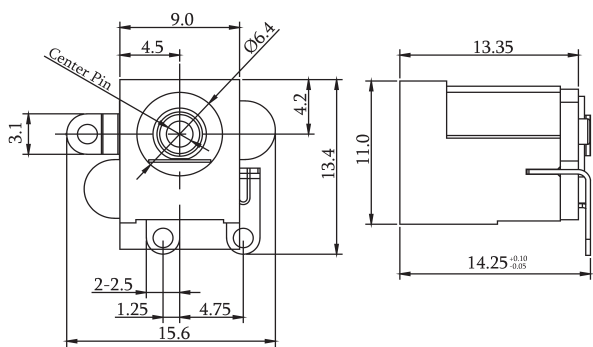
5-40~5-47

• DC Jack



AMTEK Technology Co., Ltd

## DC Jack Conn. SMT Vertical Type



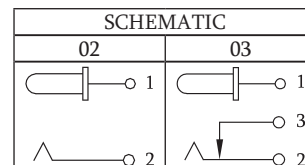
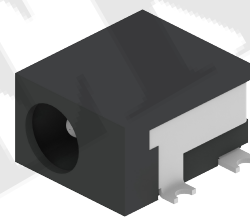
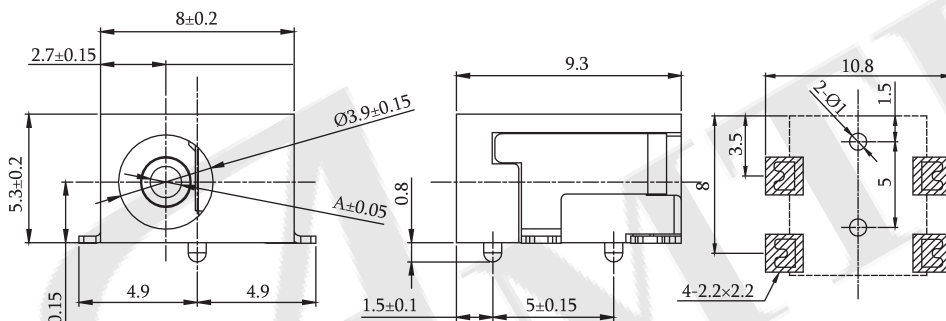
NO.	Description	Material	Finish	QTY
1	Terminal 1	Brass	Silver Plated	1
2	Terminal 2	Phosphor Bronze	Silver Plated	1
3	Terminal 3	Brass	Silver Plated	1
4	Pin	Brass	Nickel Plated	1
5	Housing	Nylon 9T	Black, UL94V-0	1
6	Cover	Nylon 9T	Black, UL94V-0	1
7	Mylar	Polyimide Tape		1

Recommended PCB Layout  
(PCB TOLERANCE  $\pm 0.05$ )

**P/N.:5DJXXMA01-03SVBUM-02**

20:ø2.0 25:ø2.5

## DC Jack Conn. SMT R/A Type



Recommended PCB Layout  
(PCB TOLERANCE  $\pm 0.05$ )

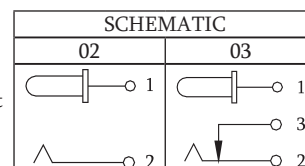
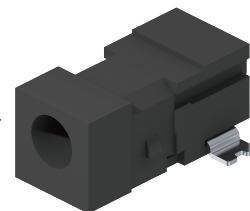
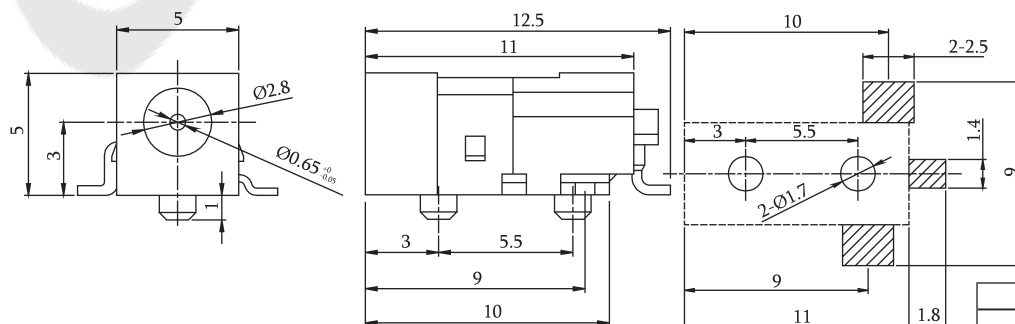
**P/N.:5DJXXMC02-XXSVBUH-01**

10:ø1.0 02~03Pin

13:ø1.3

Old P/N:DCJXX-0330SVB-U

NO.	Description	Material	Finish	QTY
1	Housing	PA9T, UL94V-0		1
2	Center Pin	Brass	Cusn / Nickel Plated	1
3	Center Pin Terminal	Brass T=0.3	Silver Plated	1
4	Tip Spring	Phosphor Bronze T=0.3	Silver Plated	1
5	Shunt Terminal	Brass T=0.3	Silver Plated	1



Recommended PCB Layout  
(PCB TOLERANCE  $\pm 0.05$ )

**P/N.:5DJ07MC17-XXSVBUX-01**

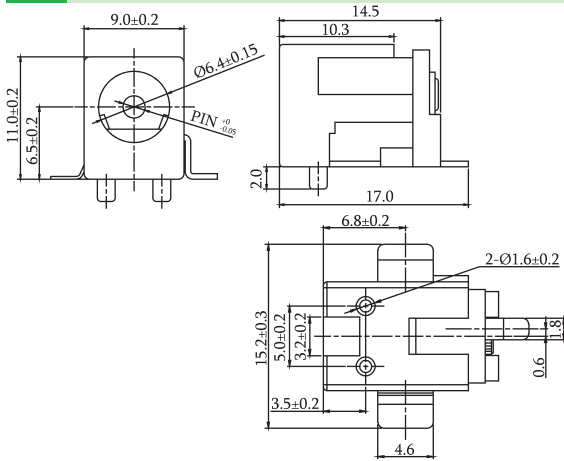
02~03Pin B: Bag H: T/R W/O Cap

NO.	Description	Material	Finish	QTY
1	Housing	PA9T		1
2	Center Pin	Phosphor Bronze	Silver Plated	1
3	Tin Spring	Stainless Steel T=0.25	Silver Plated	1
4	Shunt Terminal	Brass T=0.4	Silver Plated	1

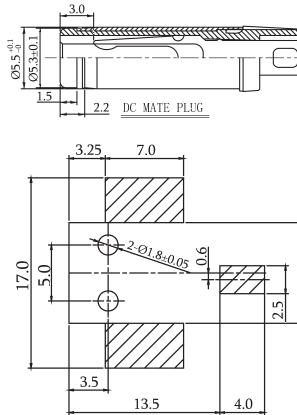
# CONNECTORS MANUFACTURER



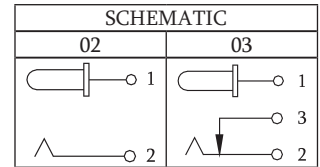
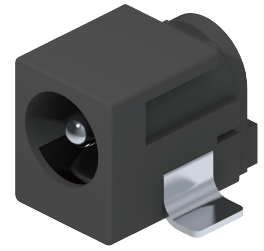
## DC Jack Conn. SMT R/A Type



NO.	Description	Material	Finish	QTY
1	Housing	PA9T	Black	1
2	Cover	PA9T	Black	1
3	Center Pin	Brass	Nickel Plated	1
4	Center Pin Terminal	Brass T=0.5	Silver Plated	1
5	Tip Spring	Phosphor Bronze T=0.25	Silver Plated	1
6	Shunt Terminal	Brass T=0.5	Silver Plated	1



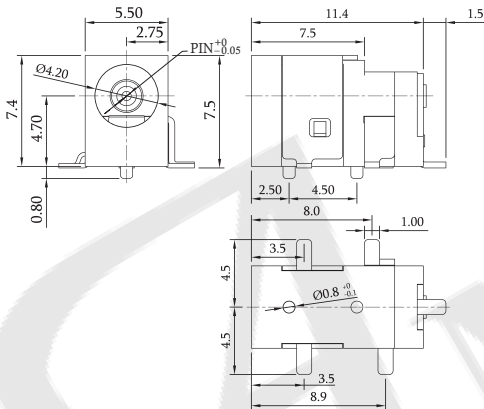
Recommended PCB Layout  
(PCB TOLERANCE ±0.05)



**P/N.:5DJXXMC23-XXSVBUH-01**

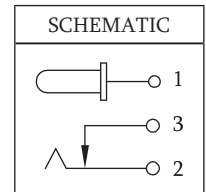
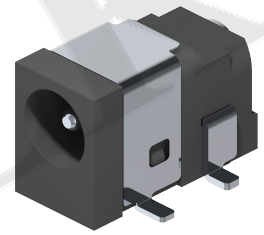
20:Ø2.0 02~03Pin  
25:Ø2.5

Old P/N:DCJXX-088BSVB-U



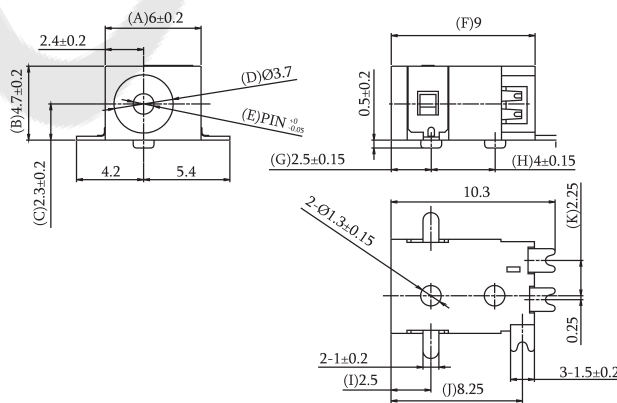
NO.	Description	Material	Finish	QTY
1	Center Pin	Copper Alloy		1
2	Terminal 1	Brass	Silver Plated	1
3	Terminal 2	Copper Alloy	Silver Plated	1
4	Terminal 3	Brass	Silver Plated	1
5	Shield Plate	Cold Rolled Steel		1
6	Housing	Hi-Temp. Plastic	Black	1
7	Cover	Hi-Temp. Plastic		1

Recommended PCB Layout  
(PCB TOLERANCE ±0.05)



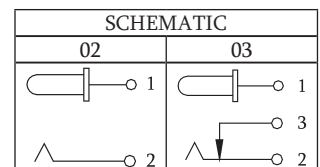
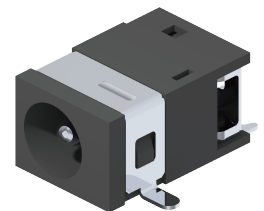
**P/N.:5DJXXMC25-03SVBUB-01**

10:Ø1.0 13:Ø1.3  
Old P/N:DCJXX-0330SVB-U



NO.	Description	Material	Finish	QTY
1	Housing	LCP	Black	1
2	Center Pin	Brass	Nickel Plated	1
3	Center Pin Terminal	Brass T=0.2	Silver Plated	1
4	Tip Spring	Beryllium Bronze T=0.3	Silver Plated	1
5	Shunt Terminal	Brass T=0.25	Silver Plated	1
6	Shield Plate	Brass T=0.2	Silver Plated	1

Recommended PCB Layout  
(PCB TOLERANCE ±0.05)



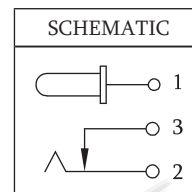
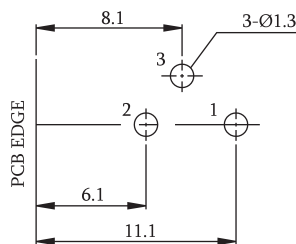
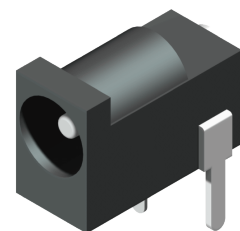
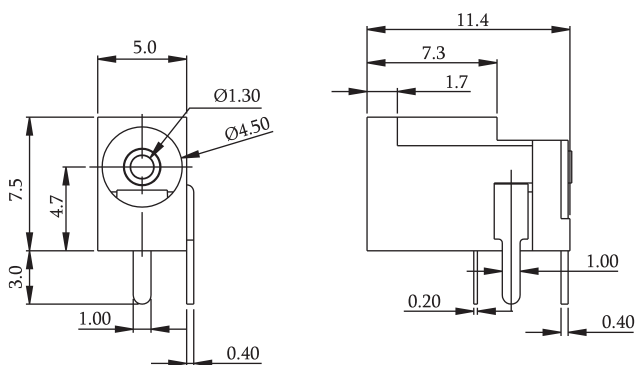
**P/N.:5DJXXMC26-XXSVBUX-01**

10:Ø1.0 02~03Pin  
13:Ø1.3 B: Bag  
Old P/N:DCJXX-0045BSVB-U H: T/R W/O Cap

DC Jack Conn.

ROHS

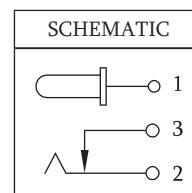
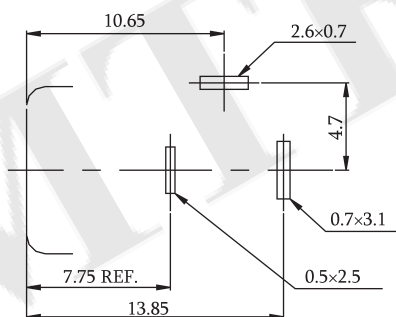
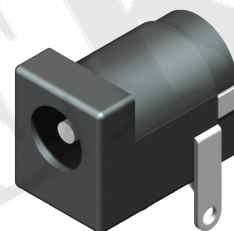
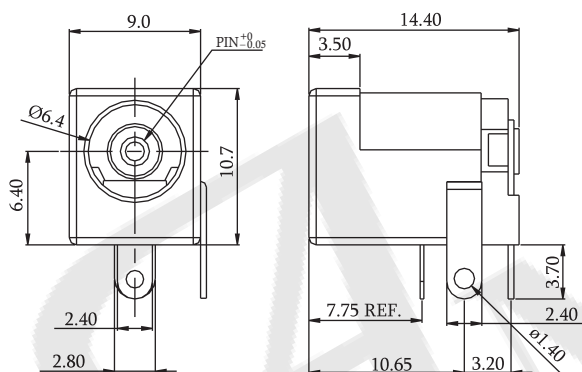
## DC Jack Conn. Dip R/A Type



Recommended PCB Layout(Bottom View)  
(PCB TOLERANCE  $\pm 0.05$ )

NO.	Description	Material	Finish	QTY
1	Pin Term.	Brass 0.4	Tin Plated	1
2	Sleeve Term.	P.B.S 0.2	Tin Plated	1
3	Break Term.	Brass 0.4	Tin Plated	1
4	Center Pin	Brass $\Phi 1.3$	Nickel Plated	1
5	Housing	PBT G.F.	Black	1
6	Black Cover	PBT G.F.	Black	1

**P/N.:5DJ13DC01-03T0BLB-01**  
Old P/N:DCJXX-0011TB-L

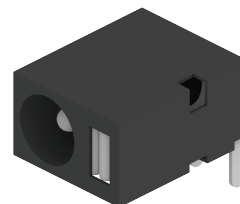
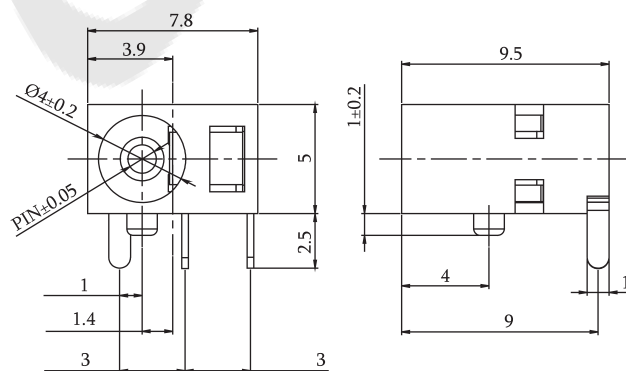


Recommended PCB Layout(Bottom View)  
(PCB TOLERANCE  $\pm 0.05$ )

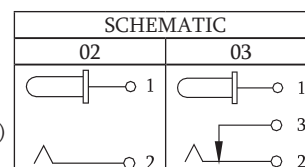
NO.	Description	Material	Finish	QTY
1	Pin Term.	Brass T=0.4	Tin Plated	1
2	Sleeve Term.	PBS T=0.25	Tin Plated	1
3	Break Term.	Brass T=0.4	Tin Plated	1
4	Center Pin	Brass Dim A	Nickel Plated	1
5	Housing	PBT G.F.	Black	1
6	Back Cover	PBT G.F.	Black	1

**P/N.:5DJXXDC02-03T0BLB-01**

20: $\phi 2.0$  25: $\phi 2.5$   
Old P/N:DCJXX-0330SVB-U



Recommended PCB Layout(Bottom View)  
(PCB TOLERANCE  $\pm 0.05$ )



NO.	Description	Material	Finish	QTY
1	Housing	PBT / PA66		1
2	Center Pin	Copper Alloy	Nickel Plated	1
3	Center Pin Terminal	Brass T=0.3	Silver Plated	1
4	Tip Spring	Stainless Steel T=0.3	Silver Plated	1
5	Shunt Terminal	Brass T=0.3	Silver Plated	1

**P/N.:5DJXXDC04-XXT0BLB-01**

10: $\phi 1.0$  13: $\phi 1.3$  02-03Pin  
Old P/N:DCJXX-0006BSVB-XX-L



## DC Jack Conn. Dip R/A Type

Technical drawing showing side, top, and recommended PCB layout views for DC Jack Conn. Dip R/A Type (P/N: 5DJXXDC09-03SVBLB-01). Dimensions include 9, 1.9, 6.3, 2.65, 5, 2.5, 3±0.3, 4±0.3, 3-0.7, 8±0.3, 3-0.7, 4, 3-(1.2x0.6), 2, 6, 2-Ø1, and Ø5. A 3D perspective view of the component is shown to the right.

**SCHEMATIC**

Recommended PCB Layout (PCB TOLERANCE ±0.05)

**P/N.:5DJXXDC09-03SVBLB-01**  
 10:Ø1.0 13:Ø1.3

NO.	Description	Material	Finish	QTY
1	Housing	NY66		1
2	Cover	NY66		1
3	Center Pin	Brass T=0.3	Silver Plated	1
4	Tip Spring	Sus301T=0.2	Silver Plated	1
5	Shunt Terminal	Brass T=0.3	Silver Plated	1

Technical drawing showing side, top, and recommended PCB layout views for DC Jack Conn. Dip R/A Type (P/N: 5DJXXDC36-XXT0BLB-01). Dimensions include 8.5, 4.25, 2.5, 9, 5.5, 2.5, 3, 0.2, 3.4, 4.1, 0.9, 3, 3-1.5, 8, 8.5, 4.25, 2.5, 0.2, Ø1.1, 8, 3-2.0x0.8, 4.1, 3.4, and Ø4.2. A 3D perspective view of the component is shown to the right.

**SCHEMATIC**

Recommended PCB Layout (Bottom View) (PCB TOLERANCE ±0.05)

**P/N.:5DJXXDC36-XXT0BLB-01**  
 10:Ø1.0 13:Ø1.3 02-03Pin  
 Old P/N:DCJXX-0060TB-L

NO.	Description	Material	Finish	QTY
1	Housing	PBT		1
2	Center Pin	Brass	Nickel Plated	1
3	Center Pin Terminal	Brass T=0.3	Silver Plated	1
4	Tip Spring	Phosphor Bronze T=0.25	Silver Plated	1
5	Shunt Terminal	Brass T=0.3	Silver Plated	1

Technical drawing showing side, top, and recommended PCB layout views for DC Jack Conn. Dip R/A Type (P/N: 5DJXXDC36-03SVBLB-03). Dimensions include 9.5, 3.5, 11.5, 7, 3.5±0.2, 0.3, 0.25, 5.3, 3.2, 1±0.1, 10.2, 1.4±0.1, 1.8, 1.8, 3.2, 5.3, 4, 10.2, 3-(0.8x2), and Ø6±0.2. A 3D perspective view of the component is shown to the right.

**SCHEMATIC**

Recommended PCB Layout (Bottom View) (PCB TOLERANCE ±0.05)

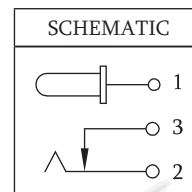
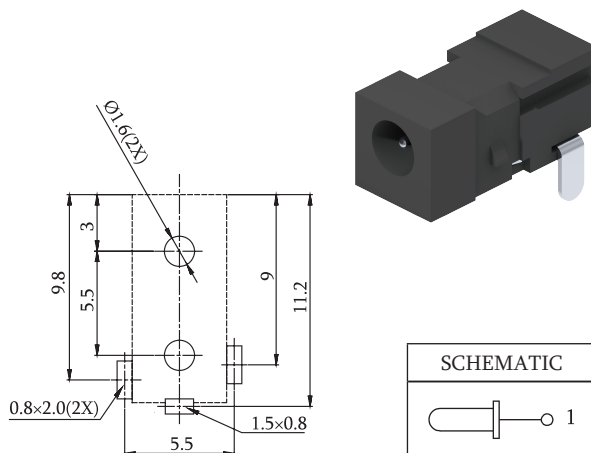
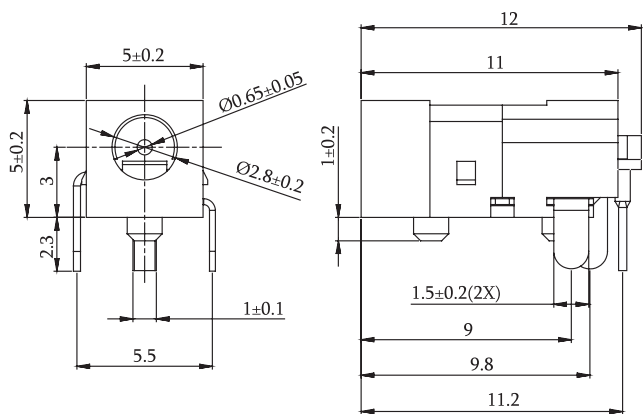
**P/N.:5DJXXDC36-03SVBLB-03**  
 16:Ø1.65 20:Ø2.0 25:Ø2.5

NO.	Description	Material	Finish	QTY
1	Housing	PBT / PA9T		1
2	Center Pin	Brass	Nickel Plated	1
3	Center Pin Contact	Brass T=0.25	Silver Plated	1
4	Tip Spring	Phosphor Bronze T=0.3	Silver Plated	1
5	Shunt Terminal	Brass T=0.3	Silver Plated	1

DC Jack Conn.

ROHS

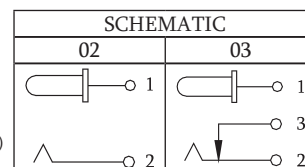
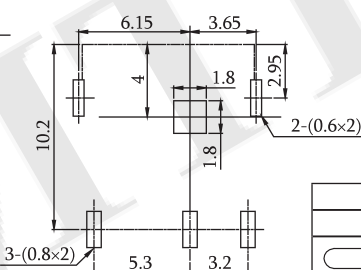
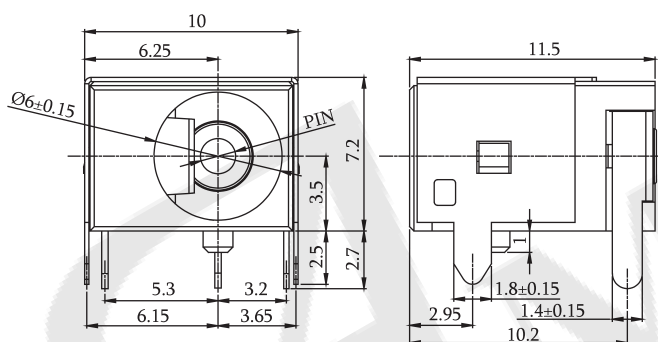
## DC Jack Conn. Dip R/A Type



NO.	Description	Material	Finish	QTY
1	Housing	PBT	Black	1
2	Center Pin	Bronze	Silver Plated	1
3	Tin Spring	Beryllium Bronze T=0.25	Silver Plated	1
4	Shunt Terminal	Brass T=0.3	Silver Plated	1

Recommended PCB Layout(Bottom View)  
(PCB TOLERANCE ±0.05)

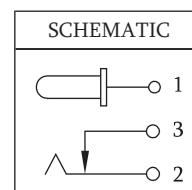
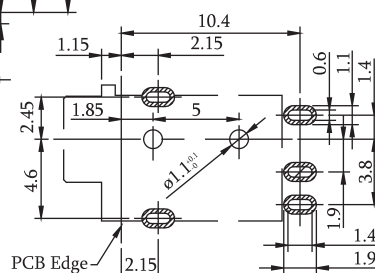
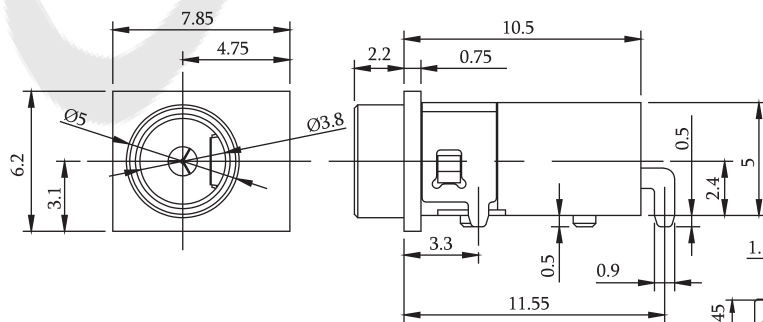
P/N.:5DJ07DC64-03SVBLB-01  
Old P/N:DCJ065-00110SVB-XX-L



NO.	Description	Material	Finish	QTY
1	Housing	PBT / PA9T	Nickel Plated	1
2	Center Pin	Brass	Nickel Plated	1
3	Center Pin Contact	Brass	Silver Plated	1
4	Tip Spring	Phosphor Bronze	Silver Plated	1
5	Shunt Terminal	Brass	Silver Plated	1
6	Ground Shield	Brass	Nickel Plated	1

Recommended PCB Layout(Bottom View)  
(PCB TOLERANCE ±0.05)

P/N.:5DJXXDD03-XXSVBXX-01  
20:ø2.0 25:ø2.5 16:ø1.65 02-03Pin  
B:Bag A:Tray H:T/R W/O Cap  
Old P/N:DCJXX-0006BSVB-XX-L



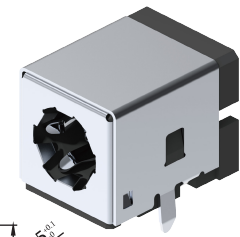
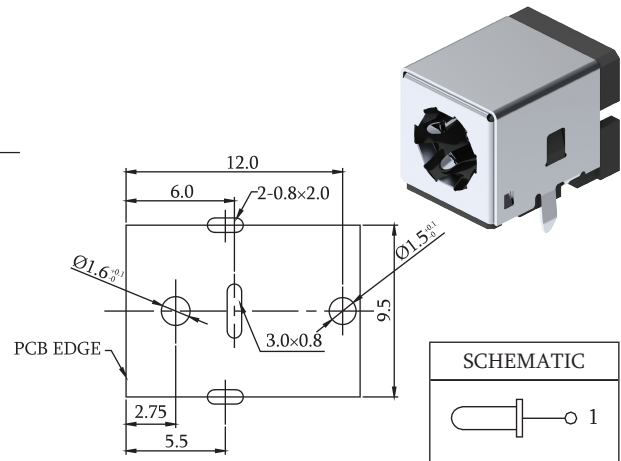
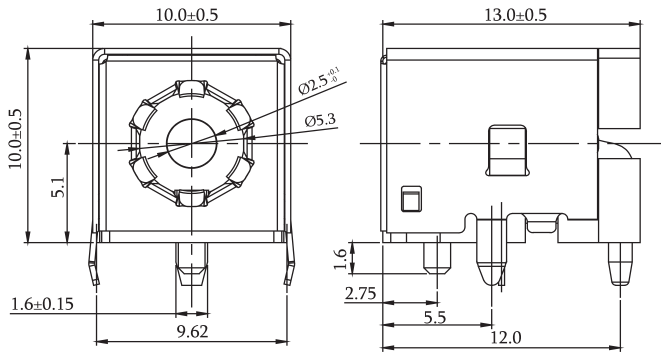
NO.	Description	Material	Finish	QTY
1	Housing	Nylon 10T, UL94V-0	Black	1
2	Cover	Nylon 10T, UL94V-0	Black	1
3	Center Pin	Phosphor Bronze T=0.30	Gold Flash	1
4	Tip Spring	Phosphor Bronze T=0.25	Gold Flash	1
5	Shunt Terminal	Brass, T=0.30	Gold Flash	1
6	Shield	Brass, T=0.20	Nickel Plated	1

Recommended PCB Layout  
(PCB TOLERANCE ±0.05)

P/N.:5DJ35DD04-03G0BUH-01

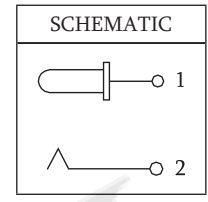


## DC Jack Conn. Dip R/A Type



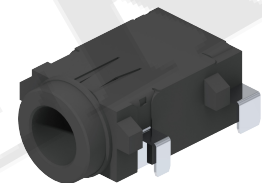
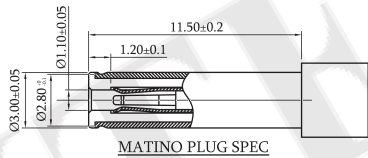
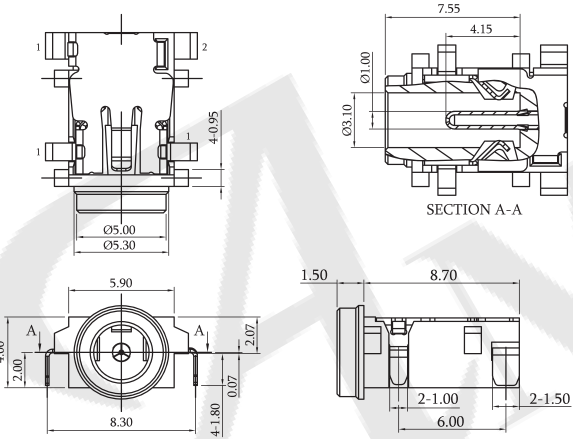
NO.	Description	Material	Finish	QTY
1	Center Pin	Zinc Alloy	Silver Plated	1
2	Tip Spring	C5191 T=0.3	Silver Plated	1
3	PEG	C2680 T=0.4		1
4	Shield Plate	SUS301 T=0.1		1
5	Ground Shield	C5191 T=0.3	Nickel Plating	1
6	Housing	PA10T	UI-94V0, Black	1

Recommended PCB Layout  
(PCB TOLERANCE ±0.05)



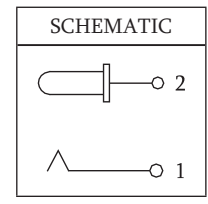
P/N.:5DJ25DD71-02SVBUH-02

## DC Jack Conn. Dip R/A Sink Type

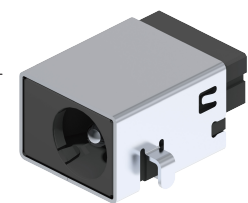
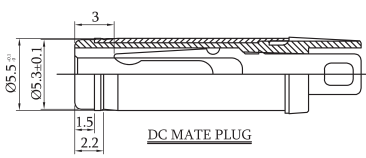
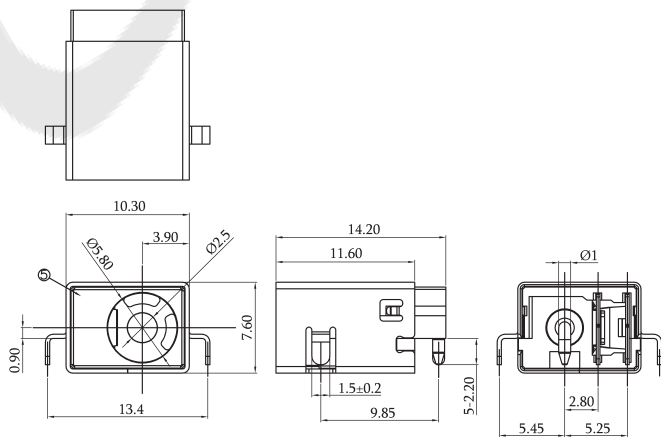


NO.	Description	Material	Finish	QTY
1	Housing	PA10T	Black	1
2	Center Pin	Copper alloy T=0.2	Contact area and solder area: gold flash under Plated: Ni 40u" MIN	1
3	Spring	Copper alloy T=0.2	Contact area and solder area: gold flash under Plated: Ni 40u" MIN	1

Recommended PCB Layout  
(PCB TOLERANCE ±0.05)

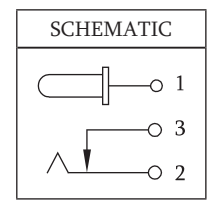


P/N.:5DJ10DD72-02SVBUH-01



NO.	Description	Material	Finish	QTY
1	Housing	High-temp Thermoplastic	Black	1
2	Pin	Copper alloy	Gold Plated	1
3	Tip spring	Copper alloy	Silver Plated	1
4	Shunt terminal	Copper alloy	Silver Plated	1
5	Grounding	Stainless Steel		1
6	Shell	Copper alloy	Nickel Plated	1

Recommended PCB Layout  
(PCB TOLERANCE ±0.05)

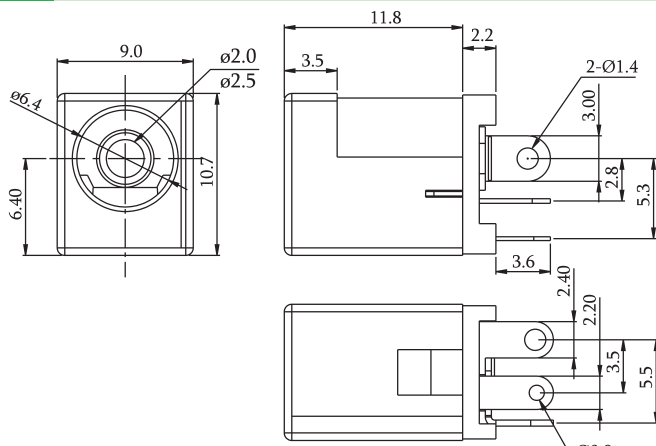


P/N.:5DJ25DD73-03SVBUH-01  
Old P/N.:DCJXX-088BSVB-U

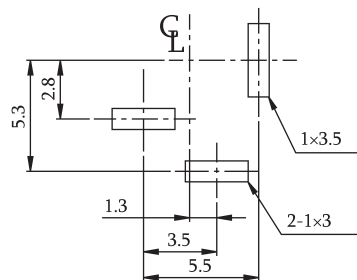
DC Jack Conn.

ROHS

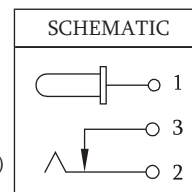
## DC Jack Conn. Dip Vertical



NO.	Description	Material	Finish	QTY
1	Pin Term	Brass T=0.4	Tin Plated	1
2	Sleeve Term	Phosphor Bronze T=0.25	Tin Plated	1
3	Break Term	Brass T=0.4	Tin Plated	1
4	Center Pin	Brass	Nickel Plated	1
5	Housing	PBT G.F.	Black	1
6	Bottom Cover	PBT G.F.	Black	1

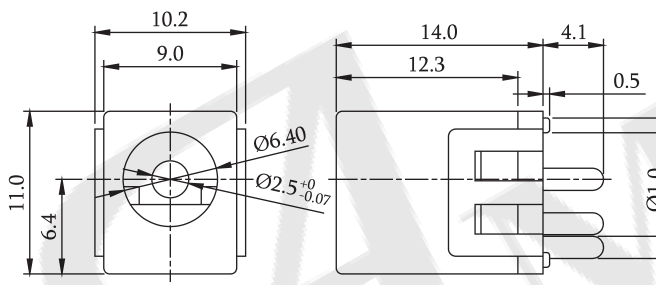


Recommended PCB Layout (Bottom View)  
(PCB TOLERANCE  $\pm 0.05$ )



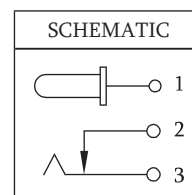
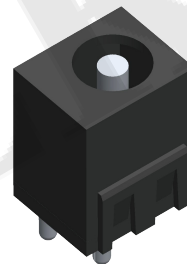
P/N.:5DJXXDA02-03T0BLB-01

20: $\phi 2.0$  25: $\phi 2.5$   
Old P/N:DCJXXD-0013TB-L



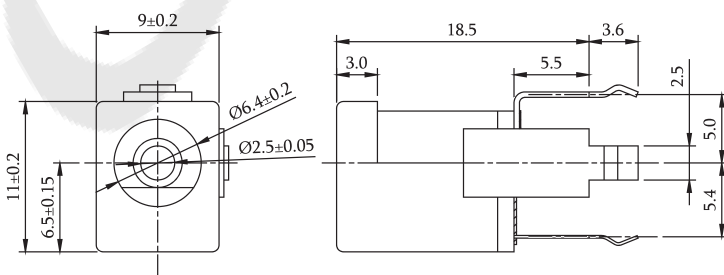
NO.	Description	Material	Finish	QTY
1	Terminal	P.B.S	Silver Plated	1
2	Terminal	Brass	Silver Plated	1
3	Center Pin	Copper Alloy	Silver Plated	1
4	Cover	PA6T	Black	1
5	Housing	PBT	Black	1

Recommended PCB Layout  
(PCB TOLERANCE  $\pm 0.05$ )



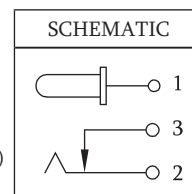
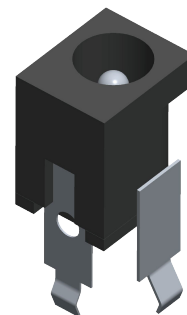
P/N.:5DJ25DA06-03SVBLB-01

Old P/N:LD-0222-2.5



NO.	Description	Material	Finish	QTY
1	Housing	Thermoplastic	Black	1
2	Cover	PF		1
3	Center Pin	Copper Alloy	Tin Plated	1
4	Center Pin Terminal	Copper Alloy	Tin Plated	1
5	Tip Spring	Cold Rolled Steel	Tin Plated	1
6	Shunt Terminal	Copper Alloy	Tin Plated	1
7	Gel			1

Recommended PCB Layout (Bottom View)  
(PCB TOLERANCE  $\pm 0.05$ )



P/N.:5DJ25DA08-03T0BLB-02

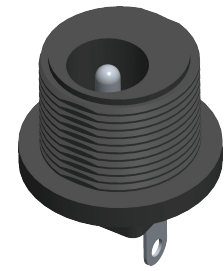
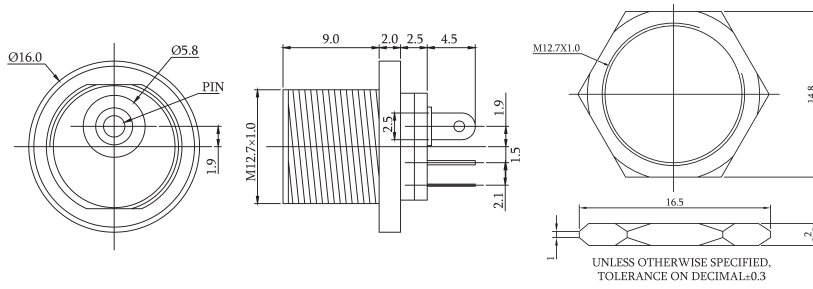
Old P/N:DCJ25-0140TB-03-S01-L



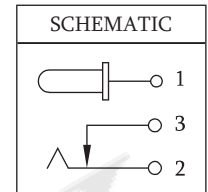
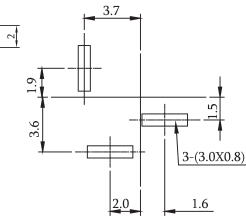
# CONNECTORS MANUFACTURER



## DC Jack Conn. Dip Vertical

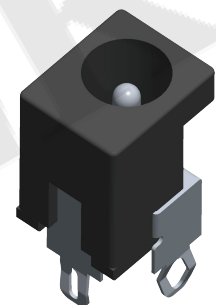
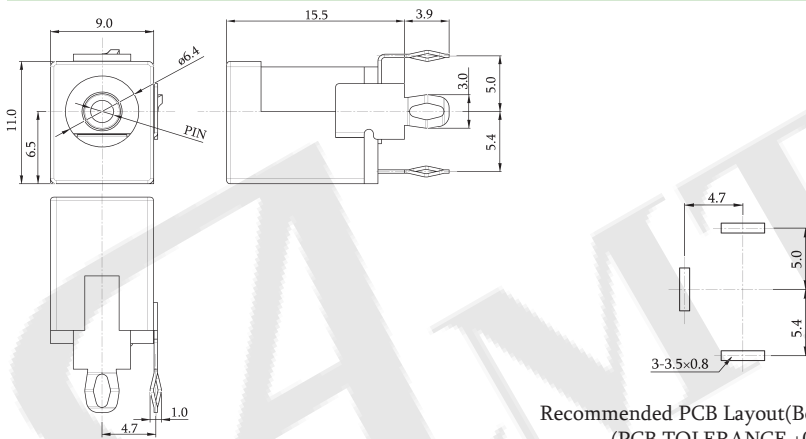


NO.	Description	Material	Finish	QTY
1	Housing	PBT 4815	UL-94V0, Black	1
2	Flat Piece	C2680	Tin Plated	1
3	Spring	SUS301	Tin Plated	1
4	Pin	Copper Alloy	Nickel Plated	1
5	Contact Foot	C2680	Tin Plated	1
6	Cover	PF		1
7	Nut	Copper Alloy	Nickel Plated	1



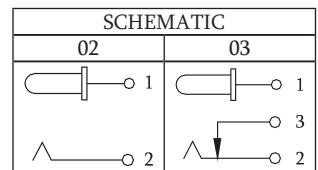
Recommended PCB Layout  
(PCB TOLERANCE ±0.05)

**P/N.:5DJ20DA17-03T0BLB-02**



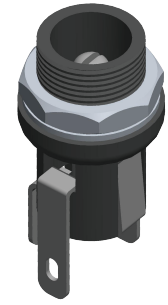
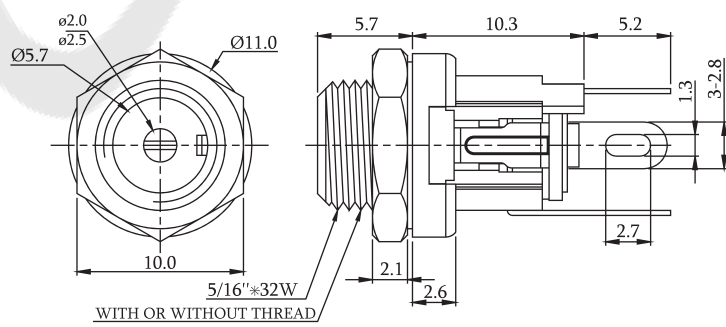
NO.	Description	Material	Finish	QTY
1	Housing	PBT, UL94V-0	Black / White	1
2	Cover	PF		1
3	Center Pin	Brass	Nickel Plated	1
4	Center Pin Terminal	Brass T=0.3	Tin Plated	1
5	Tip Spring	Phosphor Bronze T=0.3	Tin Plated	1
6	Shunt Terminal	Brass T=0.3	Tin Plated	1

Recommended PCB Layout (Bottom View)  
(PCB TOLERANCE ±0.05)

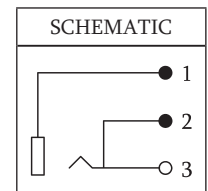
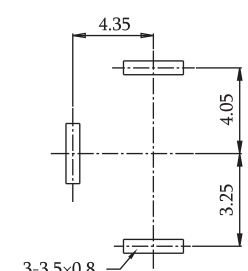


**P/N.:5DJXXDA27-XXT0XLB-01**

**20:ø2.0 24:ø2.35 25:ø2.5** — **02~03Pin**  
**B:Black W:White**  
**Old P/N:DCJXX-013BTX-L**



NO.	Description	Material	Finish	QTY
1	Sleeve String	PBS	Silver Plated	1
2	Break Terminal	Brass	Silver Plated	1
3	Pin Terminal	Brass	Silver Plated	1
4	Bushing	Brass	Nickel Plated	1
5	Pin	Copper Alloy	Nickel Plated	1
6	Insulator	Paper Sheet	Red	2
7	Housing	PA66	Black	1
8	Nut	SPCC	Nickel Plated	1
9	Washer	SPCC	Nickel Plated	1



Recommended PCB Layout  
(PCB TOLERANCE ±0.05)

**P/N.:5DJXXDA28-03SVBLB-02**

**20:ø2.0 25:ø2.5**  
**Old P/N:DCJXX-0025BMSVB-03-L**

**DC Jack Conn.**

**ROHS**